



PT. TOKKI ENGINEERING AND FABRICATION



We are pioneers of
fabrication with special materials

Company name : PT. TOKKI ENGINEERING AND FABRICATION (略称TEF)

Establish : 16 April 2019

Capital : IDR. 120 Billion (1,200億ルピア) | USD. 7,4 Million

Shareholder : 徳機(株) / TOKKI LTD. (99.9%) & 岡田産業(株) / OKADA SANGYO CO.LTD (0.1%)

President Director : Ryoichi Yunomae (湯之前 良一)

Business: 圧力容器等溶接組立品 / Welding assembly including pressure



PLANT [**Discovery**] (Cikarang Factory) **BONDED ZONE FACILITY**

Jl. Jababeka X II B Blok. W-26
Kawasan Industri Jababeka I
Desa Harjamekar Kec. Cikarang
Utara Kab. Bekasi Indonesia 17530
TEL : +62-21-893-6733
FAX : +62-21-893-6737



PLANT [**Endeavor**] (Cilegon Factory) **NON-BONDED ZONE FACILITY**

Kawasan Industri Krakatau 1
JL. Australia I Kav. C1/2 Kel.
Warnasari, Kec. Citangkil,
Kota Cilegon, Banten, Indonesia
42443
TEL : +62-254 831 7243, 831-7244



Our business fields / TEFの事業拠点



EDV Cilegon

DSC Cikarang

VYG Gresik

PT TOKKI ENGINEERING AND FABRICATION is providing quality products and good after-sales technical service from the Tropical Island in Indonesia to all over the world.

We are the specialized Company in the welded pressure vessels and sheet metal combining of industrial infrastructure Including Oil & Gas, Petrochemicals, Pharmaceuticals, Fertilizer, Agricultural chemicals, Power Plant and Thermal Processing industries.

We show the spirit of challenge based on the differential advantage of "Engineering Capability", "Consulting", "Workmanship (Proficiency in Welding)", "Special Materials", research and develop, manufacture, and sell our products which make our Customers satisfied.

We believe our Company owes its prosperity to the strong and kind support of our Customers, people working with us, and local citizens. We would like to ask for your continued support and guidance.



Ryohichi Yunomae (湯之前 良一)

TEL: +62-21-893-6733

FAX: +62-21-893-6737

Mobile: +62-811-1538-396

E-mail: yunomae@tef.co.id

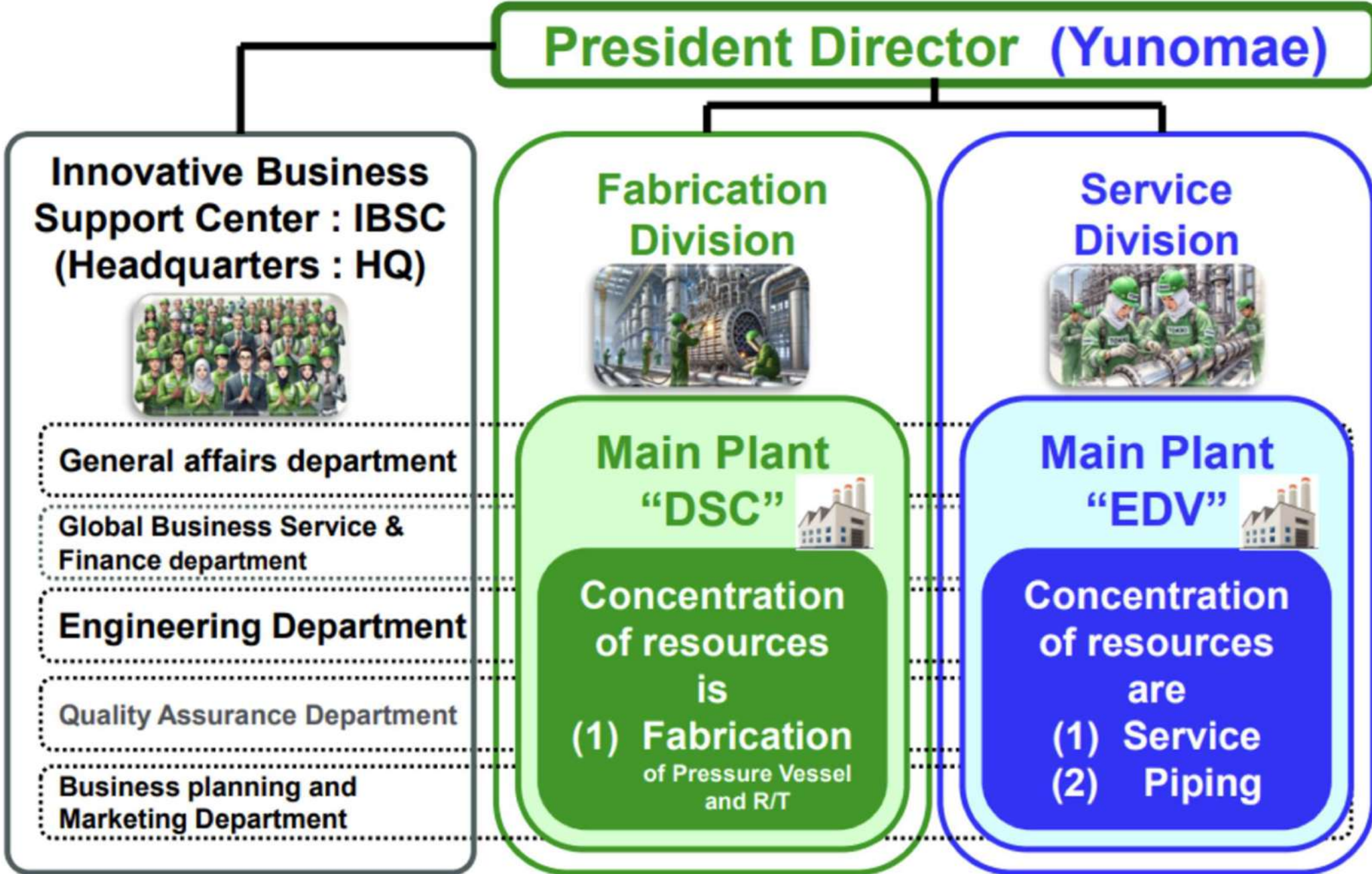
沿革 / Business history



Year	Month	Event	出来事
1997	Mar	Establishment of PT MMC METAL FABRICATION (MMF)	MMF会社設立
1998	Jan	Beginning of MMC METAL FABRICATION operation	MMF操業開始
1999	Sep	ISO9001 acquisition	ISO9001 取得
	Nov	First MHLW Class 1 vessel	第一種圧力容器初号機
2000	Apr	ASME license acquisition	ASME認証取得
2002	Feb	First ASME vessel	ASME容器初号機
	May	First HPGSL vessel	高圧ガス特定則機器初号機
2007	Feb	Achieved 1,000 projects	1,000号機出荷
	Mar	10th anniversary	設立10周年
2015	Nov	Achieved 2,000 projects	2,000号機出荷
2017	Mar	20th anniversary	設立20周年
	Nov	Opening of marketing branch in Cilegon	Cilegon営業・マーケティング事務所開設
2018	Aug	Opening of workshop in Cilegon	Cilegon工場開設 (レンタル工場)
2019	Apr	Establish of PT TOKKI ENGINEERING AND FABRICATION (TEF)	TEF会社設立
	Nov	Business transfer from MMF to TEF	事業移管(MMF⇒TEF)
2021	Nov	Cilegon dream factory "Endeavor" Start of Construction	Cilegonドリーム新工場Endeavor着工
2022	Jul	Start production at "Endeavor" Cilegon Plant	新工場Endeavorの事業開始
2023	Apr	Opening of marketing office "SIMBA" in Gresik Jawa East	東ジャワ・マーケティング事務所「SIMBA」開設
2024	Jul	Established PINISI workshop at Discovery	DiscoveryにPinisiワークショップを開設
2025	Jan	New workshop Voyager set up in Gresik	Gresikに新ワークショップボイジャーを開設

New organization chart as of December 1st, 2024

Functions and resource concentration for each business





Area : 15,000 M2 | Roofed : 3,100 M2

Overhead crane : 20 Tons

Plate roll machine : T.30 mm

Max. Equipment : OD.3400 x 20 M

Discovery – Cikarang New Workshop



Roofed : 1,080 M2

Overhead crane : 10 Tons x 2 Units

Endeavor – Cilegon Workshop



Area : 20,000 M2 | Roofed : 1,200 M2

Overhead crane : 30 Tons

Plate roll machine : T.50 mm

Max. Equipment : OD. 4000 x 20 M

Voyager – Gresik Office & Service Workshop



PT. TOKKI ENGINEERING AND FABRICATION



We aspire to be a solution provider that minimizes maintenance costs in the process industry

プロセス産業のメンテナンスコストを最小化するソリューションプロバイダー



TEFの主要製品 / Our typical fabricated products

塔・槽類

Vessel, Reactor and Tower



熱交換器

Heat Exchanger



配管

Piping (Fittings)



Chemical processing (化学・医薬プロセス)

Industrial furnaces & Steel mill (工業炉及び製鉄産業)

ラジアントチューブ

Radiant Tube



マッフル

Muffle



その他

Others





Special Metal such as Ni Alloy & Titanium

**Engineering
Corrosion consultation**

Fabrication

**Service
Maintenance**

Corrosion Consultation

Learning & Training (Well-Ding)

Sales Marketing Design Purchasing Planning

Manufacturing & Inspection

Re-Tubing & Laying piping



Corrosion consultation as process industries doctor



Chemical

Oil refinery

Pharmaceutical

Our business field

Steel & Copper

Carburizing & Sintering

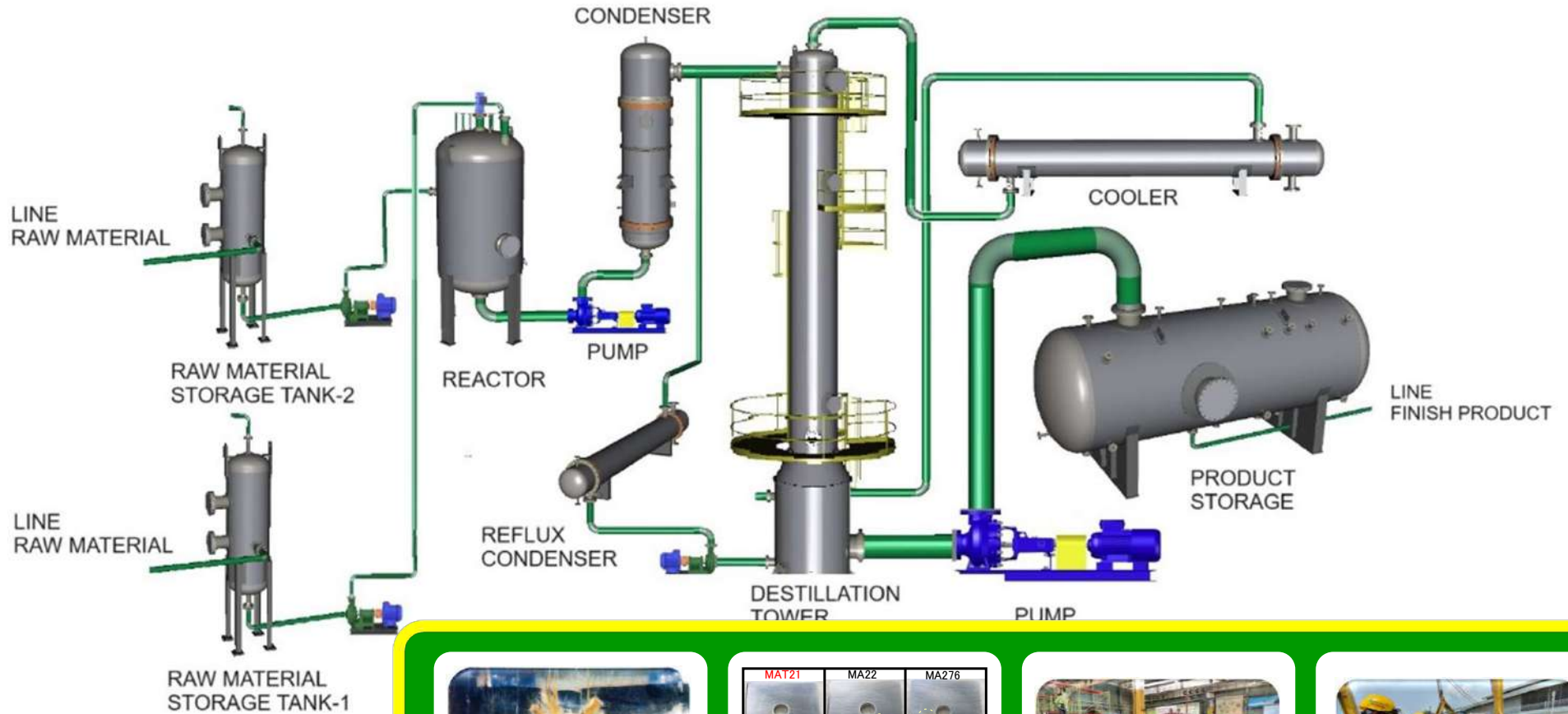
Oil & Gas



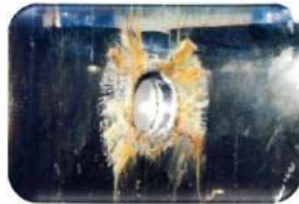
Geothermal



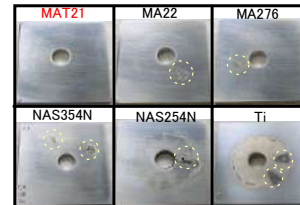
**We will contribute to improving
the production efficiency and reliability of process industries**
私たちはプロセス産業の生産効率と信頼性の向上に貢献致します



**Contributing to
process optimization
by solving corrosion
issues**



**Corrosion
issue**



**Material
recommendation**



Fabrication



Maintenance

We can support process industries in solving these issues

PT. TOKKI ENGINEERING AND FABRICATION

Three Strategies for Corrosion Prevention of Equipment Plant



Roll Clad



Explosion Clad

Clad Metals
(1) Roll Bonded Clad
(2) Explosion Cladding



Lining Metals
(1) Wallpaper Lining



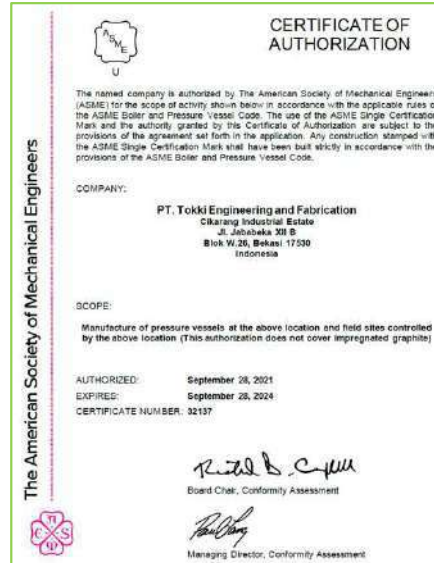
Overlay
(1) Weld overlay

各種認証 / Various Certifications



☆ **TEF** が有する認証:

- 1) ISO 9001-2015
- 2) ASME U and R stamp
- 3) MIGAS Certificate / SKT MIGAS



☆ **TEF** は日本の第一種圧力容器、第二種圧力容器、高圧ガス特定則の他、マレーシアDOSH や シンガポールMOMにも対応可能です。

TEF also can comply other Pressure Vessel Code such as Japanese code, DOSH (Malaysia), MOM (Singapore), Disnaker (Indonesia).



Maximum size of Fabricated Products

Maximum size of the Fabricated Products are limited by inland transportation.

Maximum Diameter	6 m
Maximum Length	30 m approximately

The Fabricated Products with the maximum limit size will be negotiable.



材質及び製品タイプ別販売実績 / Experienced Materials and Equipment Diagram



	MATERIAL	UNS Number	TOWER/ COLUMN	VESSEL/ REACTOR	HEAT EXCHANGER	PIPING	MUFFLE	RADIANT TUBE	OTHERS
Ni Base Alloy	MAT21	N06210							
	ALLOY C-22	N06022							
	ALLOY C-276	N10276							
	ALLOY C-4	N06455							
	ALLOY B-2,3	N10665 / N10675							
	Ni 200/201	N02200 / N02201							
	Monel 400	N04400							
	ALLOY 230	N06230							
	ALLOY 600	N06600							
	ALLOY 601	N06601							
	ALLOY X	N06002							
	ALLOY 800/H/HT	N08800/N08810/N08811							
	ALLOY 625	N06625							
	ALLOY 20Nb-3	N08020							
	MC ALLOY	N06044							
	MA47P	-							
	UMCo-50	-							
	ALLOY G-30	N06030							
ALLOY C2000	N06200								
ALLOY 926	N08926								
ALLOY 59	N06059								
ALLOY 31	N08031								
Titanium	Ti Gr.1	R50250							
	Ti Gr.2	R50400							
	Ti Gr.7	R52400							
Duplex SS	SAF2707 HD	S32707							
	SAF2507	S32750							
	SAF2205	S31803/S32205							
	S.S.329J4L	S32506							
Austenitic SS	SANICRO28	N08028							
	253 MA	S30815							
	254 SMO, YUS270	S31254							
	S.S. 904L	N08904							
	S.S. 347	S34700							
	S.S. 321	S32100							
	S.S. 310/310S	S31000/S31008							
	S.S. 317L	S31703							
	S.S. 316 / 316L	S31600 / S31603							
	S.S. 304 / 304L	S30400 / S30403							
Copper Nickel	C71500								
Carbon Steel									

Achievement 1998 – Jan 2025

3,485 project

Export

16 countries

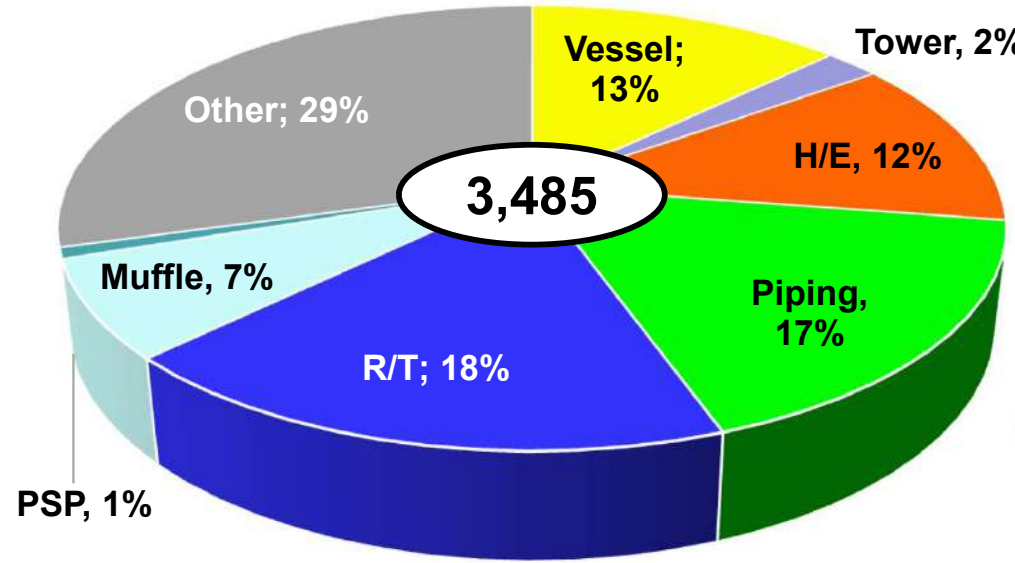
Fabrication

40+ type of material

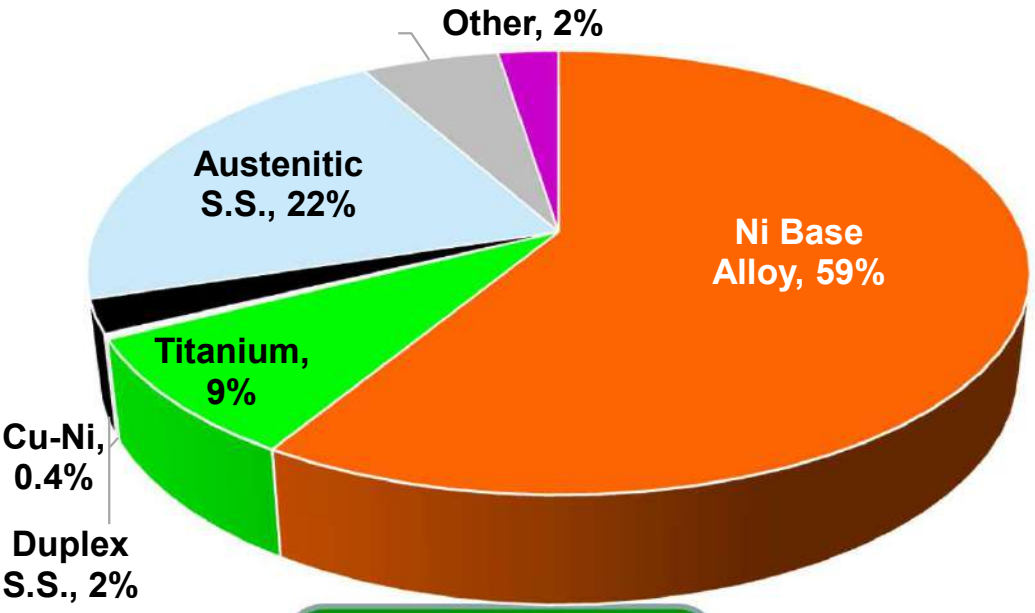
Customer

350+ (in 570 plants)

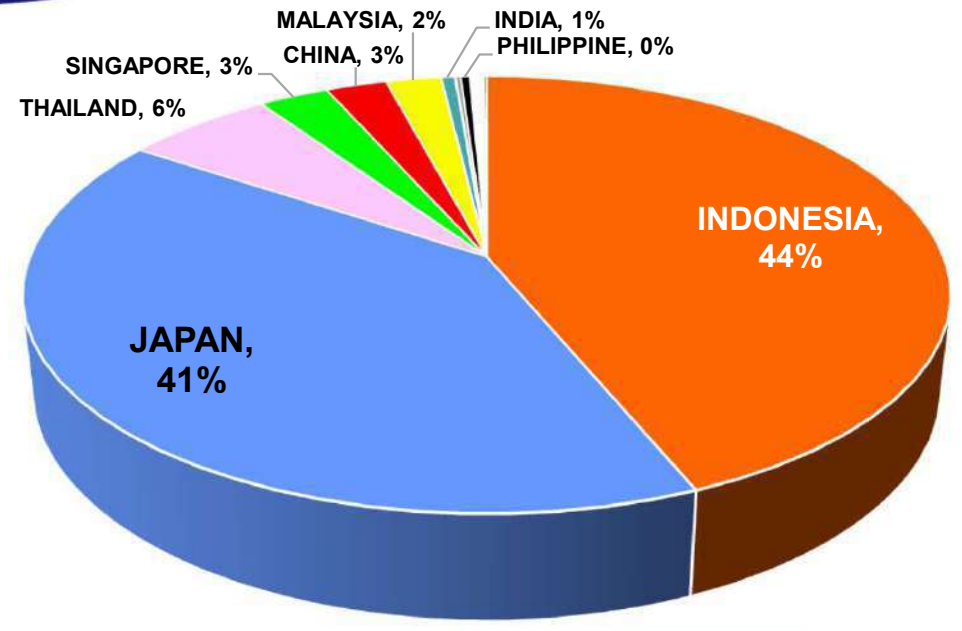
納入実績構成 / Delivery record Mix from 1998 ~ Jan 2025



By Products



By Material



By Country

TEFの主なお客様 / Major customers in ASEAN & Japan

Singapore



Malaysia



Thailand



Philippines



Japan





Indonesia (Corrosion Resistant Product)



Indonesia (Heat Resistant Product)





TEF製品の応用例 / Application examples of our products

医療用合成医薬品生成プロセスへのNi合金の応用 Application of Ni alloys to Synthetic pharmaceutical production process



Hastelloy C-22®
Reactor



Hastelloy C-22® Condenser



Hastelloy C-22 vessels for Pharmaceutical processing

医療用合成医薬プロセス向けハステロイC-22反応槽



SS904L UNS N08904 Autoclave Vessel 金属精錬所向け Alloy904L オートクレーブ



DEHYDROCHLORINATION REACTOR made of Hastelloy B-2

合成ゴムプラント向けハステロイB-2製脱塩酸反応槽

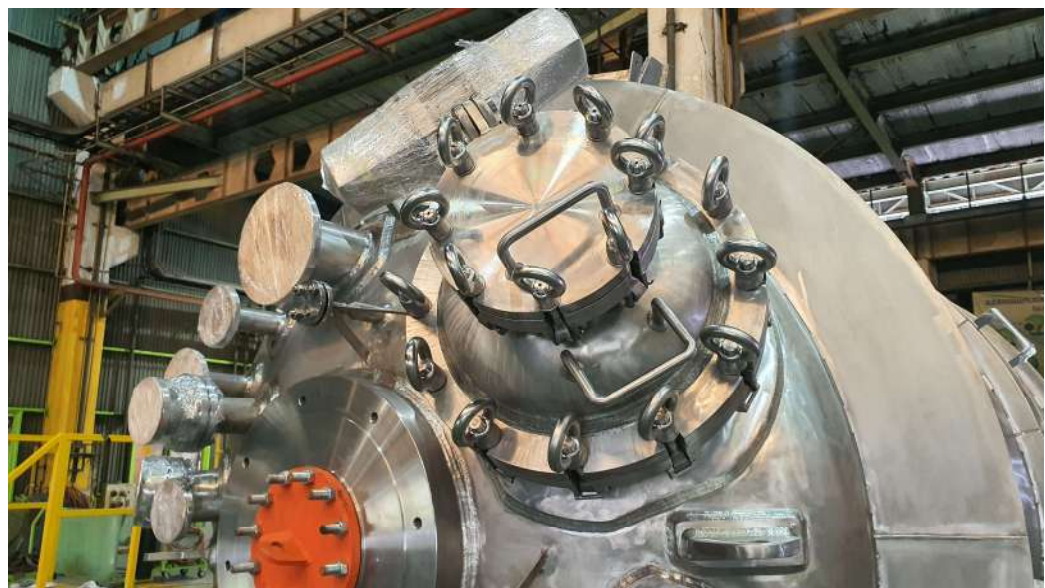


Duplex stainless steel Vessel for Ni smelter in the Philippines

フィリピン「ニッケル精錬所」向け二相ステンレス製槽



Stainless Steel 316L RE-5301 6m3 Reactor for painting material 塗料原料生成用SUS316L製反応槽



D0903 JFEI / Statomer PVC Polymerizer (重合槽)プロジェクト



Fabricated Titanium Gr.2 Tower





SS316 Vessel for Powder detergent PH adjustment process



Columns made of Pure Ni201 for Petro chemical processing 石油化学プラント向け純Niタワー



Heat Exchanger made of Hastelloy C-276 for Petro chemical processing

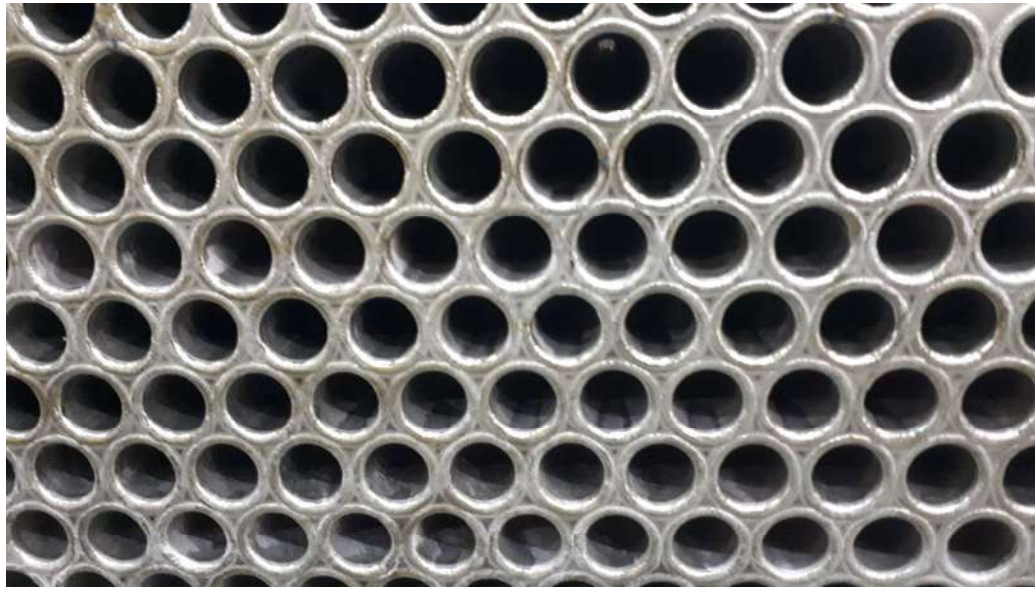
石油化学プラント向けハステロイ C-276 Uチューブ熱交換器



Heat Exchanger made of Ti Gr.2 (Thin tube : 0.7mm) for Petro chemical processing



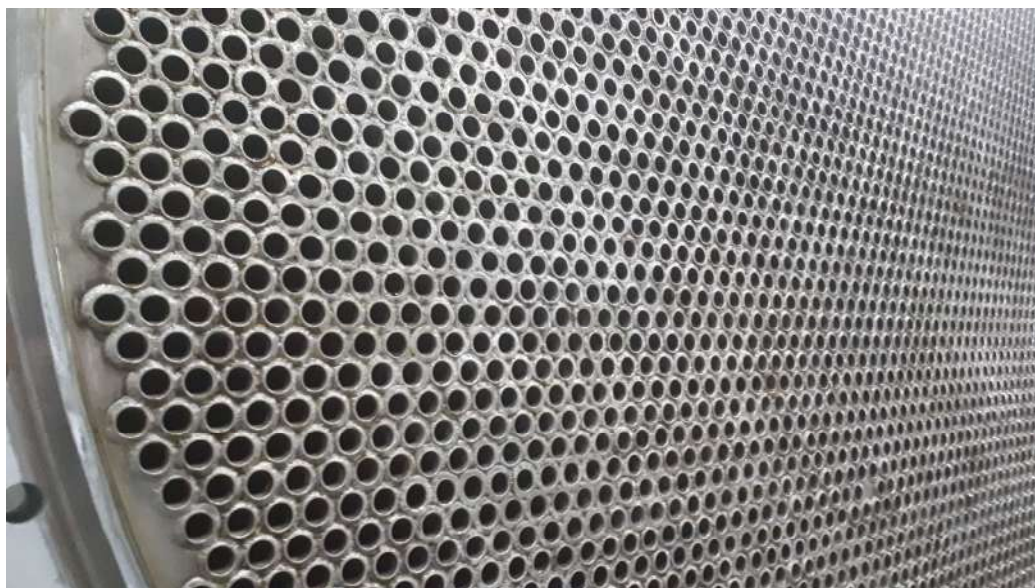
石油化学プラント向け薄肉Tiチューブ熱交換器



Heat Exchanger made of Cu-Ni for Petro chemical processing



石油化学プラント向けCu-Ni製熱交換器



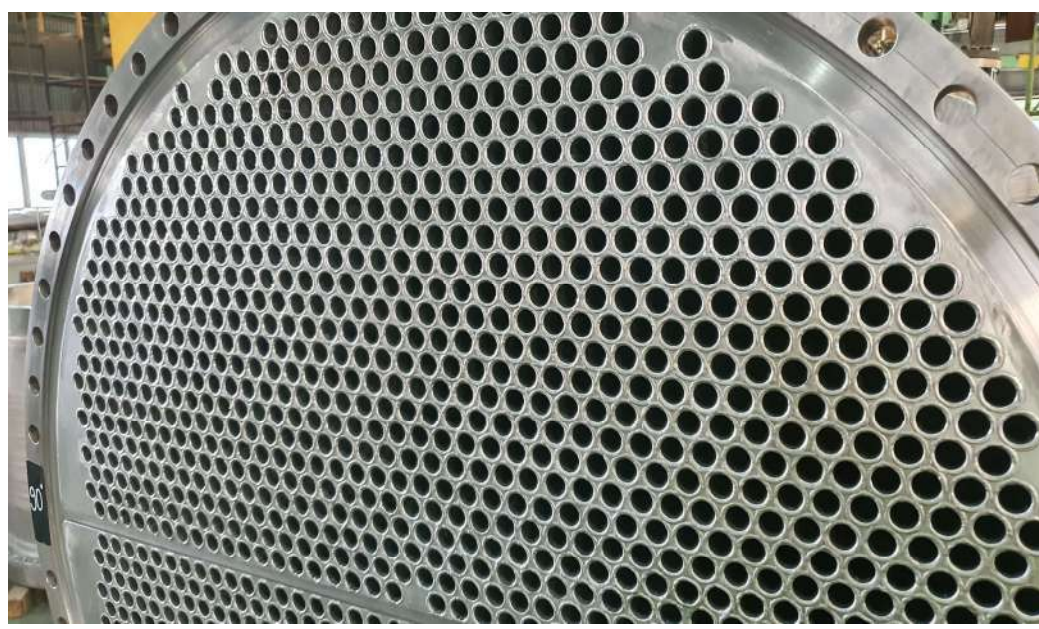
Heat Exchanger made of 90Cu- 10Ni for refinery processing

石油精製(製油所)向け90Cu- 10Ni製熱交換器





地熱発電所向けコンデンサー Condenser for Geothermal energy in Salak Indonesia



Reactor Side Cooler (Ni fined cooler) project 石油化学プロセス向け純Niフィンクーラー



Screw conveyor made of Duplex Stainless Steel

二相ステンレス製スクリーコンベア



Welded Pipe Service (溶接管サービス)



By using these 750ton press, forming die, roundness die, semi-automatic welding machine, and our skill, we can manufacture welded pipe of any size.





Available Range of Production for JIS Standard Welded Pipes

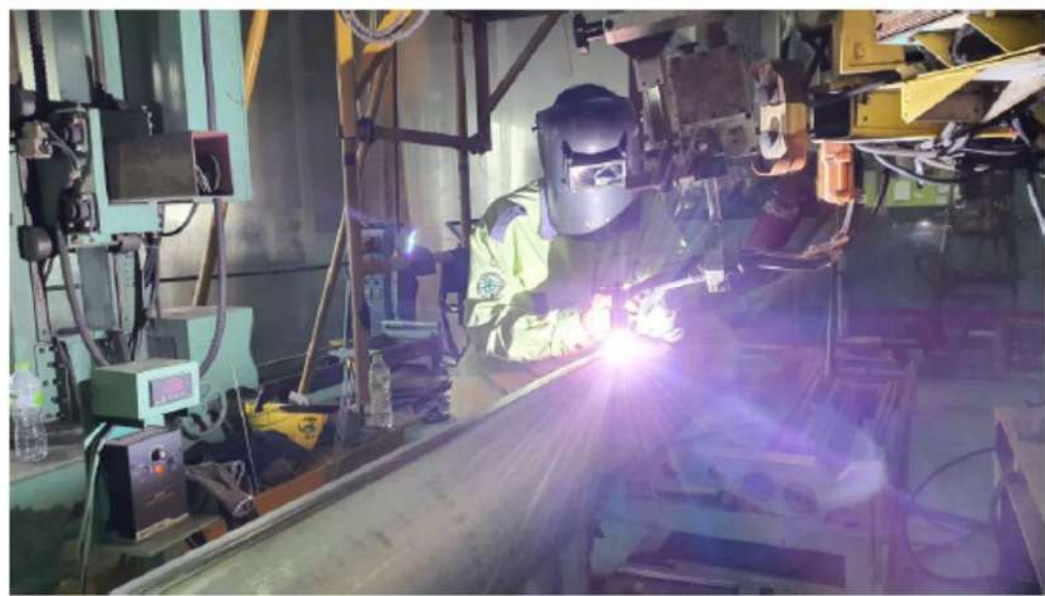
製造可能溶接管サイズ

OD / t (mm)	2.0	3.0	4.0	5.0	6.0	7.0	8.0	9.0	10.0	11.0	12.0	Max L (mm)
21.7	★	★	-	-	-	-	-	-	-	-	-	1,000
27.2	★	★	-	-	-	-	-	-	-	-	-	1,000
34.0	★	★	-	-	-	-	-	-	-	-	-	1,500
48.6	★	★	★	-	-	-	-	-	-	-	-	1,500
60.5	★	★	★	-	-	-	-	-	-	-	-	2,000
89.1	★	★	★	-	-	-	-	-	-	-	-	3,000
114.3	-	★	★	★	★	-	-	-	-	-	-	3,000
139.8	-	★	★	★	★	-	-	-	-	-	-	3,000
165.2	-	★	★	★	★	★	★	-	-	-	-	3,000
168.3	-	★	★	★	★	★	★	-	-	-	-	3,000
193.0	-	★	★	★	★	★	★	-	-	-	-	3,000
194.0	-	★	★	★	★	★	★	-	-	-	-	3,000
216.3	-	★	★	★	★	★	★	★	★	-	-	3,000
267.4	-	★	★	★	★	★	★	★	★	-	-	3,000
273.0	-	★	★	★	★	★	★	★	★	-	-	3,000
318.5	-	★	★	★	★	★	★	★	★	★	★	3,000
355.6	-	★	★	★	★	★	★	★	★	★	★	3,000

★ : Available

However, it is not limited to JIS standards, and we can manufacture welded pipes of any out diameter any length.

Manufacturing Process of Welded Pipes (溶接管施工)





Welded Pipes for Piping Line 純ニッケル (Ni) 配管



Titanium Spool Piping for PTA process in Thailand

タイ PTAプラント向けTi配管スプール





PT. TOKKI ENGINEERING AND FABRICATION (TEF)

is an innovative leader in the development and manufacture of fabricated products for high-temperature and corrosive industrial applications in installations around the world.

Our thermal processing products such as

- Radiant-tubes
- Muffles
- Retorts

for several type of heat treat furnaces.

Radiant tube using equivalent UNS No. N06230 is a flagship product due to its good strength, its resistance to carburization, and its resistance to thermal fatigue after repeated temperature cycling.

バッチ式浸炭炉用 / Batch type Radiant Tube



U-Type & I-Type Radiant tube





Applications of Heat Resistant Alloy MA23 products Muffles

連続焼成，熱処理炉用マッフル



Terima Kasih / ありがとうございます

